



# SOUTHWEST MISSOURI RESTAURANT

## BBQ Restaurant Building, Land, Business, and FF&E



### SALE PRICE: \$1,100,000 | 4,240 SF RESTAURANT

#### DEMOGRAPHICS

	1 mile	3 miles	5 miles
Estimated Population	3,116	4,704	5,323
Avg. Household Income	\$63,110	\$59,855	\$62,480

- Established restaurant with strong, consistent revenue and existing customer base
- Located on main corridor 160 Highway
- Fully operational and ready for turnkey transition with all FF&E included
- Popular BBQ concept with community loyalty and repeat traffic from surrounding towns
- Limited BBQ competition in the region enhances business success
- Ample Parking

 [CLICK HERE TO VIEW MORE LISTING INFORMATION](#)

For More Information Contact:

*Exclusive Agents*

**RYAN CLINE** | 816.412.7330 | [rcline@blockandco.com](mailto:rcline@blockandco.com)

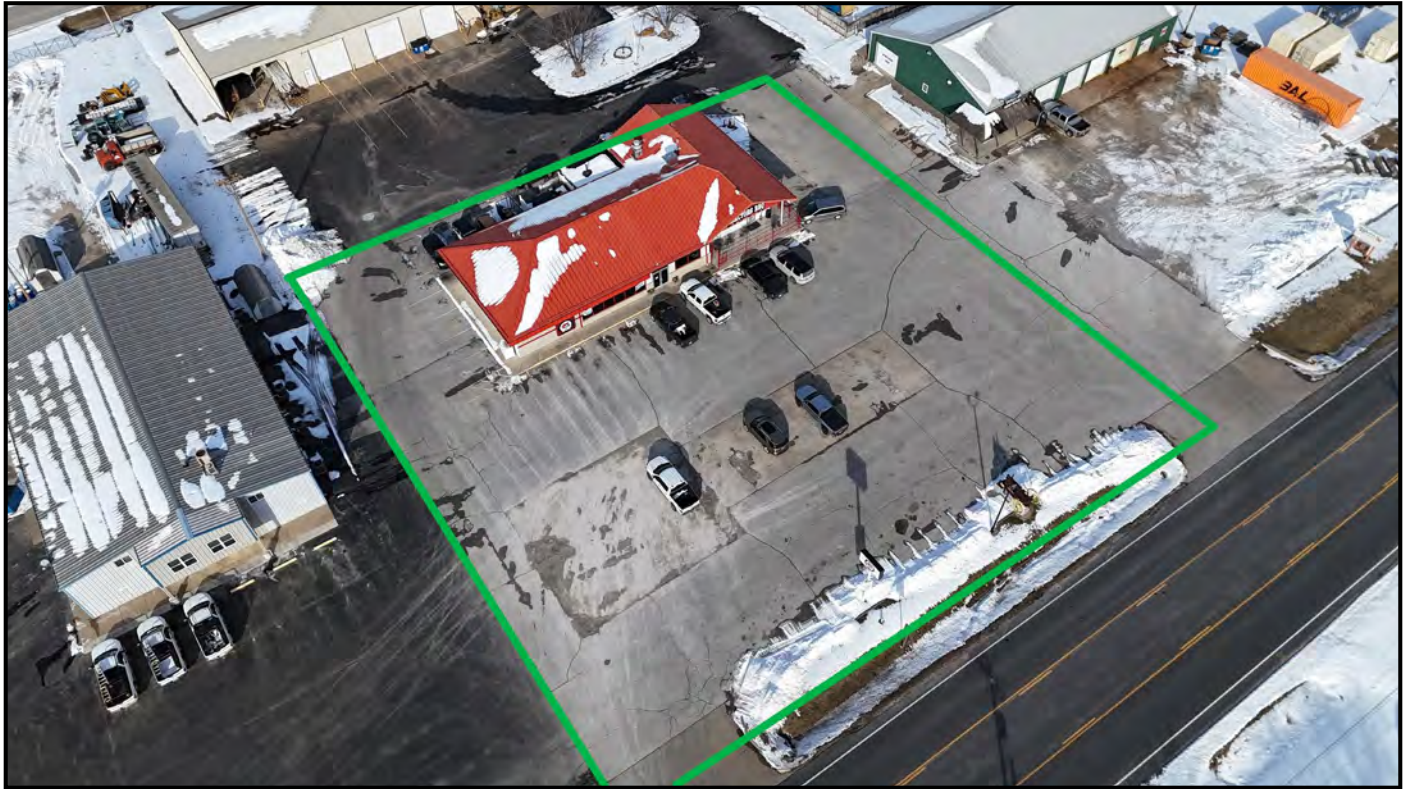
**GREG ROBERTS** | 816.412.7384 | [groberts@blockandco.com](mailto:groberts@blockandco.com)



## PHOTOS



## DRONE PHOTOS





# SOUTHWEST MISSOURI RESTAURANT

## BBQ Restaurant Building, Land, Business, and FF&E

Subject Site	1 mi radius	3 mi radius	5 mi radius
<b>Southwest Missouri</b>			
<b>Population</b>			
2025 Estimated Population	3,116	4,704	5,323
2030 Projected Population	2,847	4,298	4,923
2020 Census Population	3,451	5,200	5,809
2010 Census Population	3,694	5,510	6,133
Projected Annual Growth 2025 to 2030	-1.7%	-1.7%	-1.5%
Historical Annual Growth 2010 to 2025	-1.0%	-1.0%	-0.9%
2025 Median Age	38.1	38.7	39.1
<b>Households</b>			
2025 Estimated Households	1,342	2,035	2,281
2030 Projected Households	1,229	1,870	2,120
2020 Census Households	1,446	2,186	2,421
2010 Census Households	1,504	2,257	2,497
Projected Annual Growth 2025 to 2030	-1.7%	-1.6%	-1.4%
Historical Annual Growth 2010 to 2025	-0.7%	-0.7%	-0.6%
<b>Race and Ethnicity</b>			
2025 Estimated White	91.1%	91.7%	92.0%
2025 Estimated Black or African American	1.3%	1.2%	1.1%
2025 Estimated Asian or Pacific Islander	0.9%	0.8%	0.8%
2025 Estimated American Indian or Native Alaskan	0.7%	0.7%	0.7%
2025 Estimated Other Races	6.0%	5.7%	5.5%
2025 Estimated Hispanic	4.3%	4.0%	3.9%
<b>Income</b>			
2025 Estimated Average Household Income	\$63,110	\$59,855	\$62,480
2025 Estimated Median Household Income	\$39,803	\$38,325	\$40,880
2025 Estimated Per Capita Income	\$27,203	\$25,910	\$26,793
<b>Education (Age 25+)</b>			
2025 Estimated Elementary (Grade Level 0 to 8)	1.8%	1.8%	2.0%
2025 Estimated Some High School (Grade Level 9 to 11)	9.2%	9.8%	9.9%
2025 Estimated High School Graduate	38.2%	39.1%	38.9%
2025 Estimated Some College	16.1%	15.3%	15.7%
2025 Estimated Associates Degree Only	16.5%	15.3%	14.7%
2025 Estimated Bachelors Degree Only	15.5%	15.7%	15.4%
2025 Estimated Graduate Degree	2.7%	3.1%	3.3%
<b>Business</b>			
2025 Estimated Total Businesses	146	249	259
2025 Estimated Total Employees	1,028	2,012	2,054
2025 Estimated Employee Population per Business	7.0	8.1	7.9
2025 Estimated Residential Population per Business	21.3	18.9	20.5

©2026, Sites USA, Chandler, Arizona, 480-491-1112 Demographic Source: Applied Geographic Solutions 11/2025, TIGER Geography - RS1